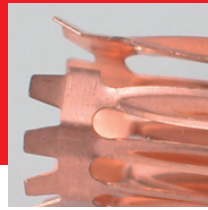


PCE

Connection
to the future





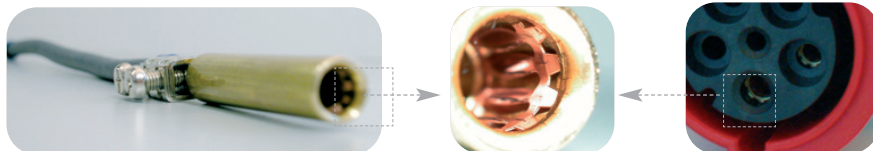
■ Safety

POWER
TWIST



■ Lamellar spring

- low insertion and extraction forces
- minimum contact resistance
- self-cleaning
- optimum contact - at least 10 contact points

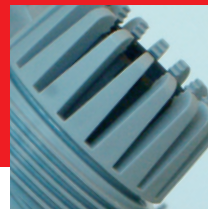
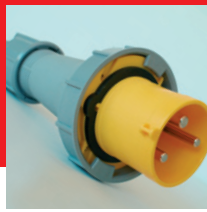
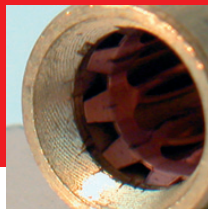
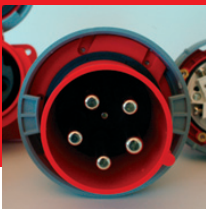


■ TWIST-cable gland

- secures the cable firmly in position
- protects from water and dust

■ Safety screw

- locks the screw cap in position

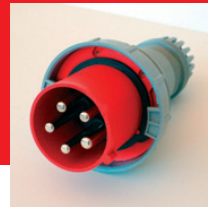


Heavy Duty

POWER
TWIST



- **For extreme environments**
- **Exceptional high impact resistance**
- **Extreme heat resistant contact carriers**
- **Anti-corrosion contacts**
 - offer protection in aggressive atmospheres, e.g. in chemical plants, food industries



Time Saving

POWER
TWIST



- **TWIST-cable gland**
 - quick and easy assembly
- **Optimum grip**
 - slim easy-grip shape - for ease of handling
- **Ample connection space**
 - fast cable installation
- **Open contact terminals, ready for assembly**

Order numbers

“Power Twist” plug

- with Twist-cable gland
- nickel-plated contacts with pilot contact



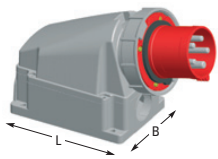
IP66/67

for waterproof cover see Accessories

Amps	Poles	110V~	230V~	400V~	500V~	>50-500V~
63	3	033-4	033-6	033-9	033-7	033-10
63	4	034-4	034-9	034-6	034-7	034-10
63	5	035-4	035-9	035-6	035-7	035-10
125	3	043-4	043-6	043-9	043-7	043-10
125	4	044-4	044-9	044-6	044-7	044-10

“Power Twist” wall mounted plug

- cable entry from top, bottom or rear
- nickel-plated contacts with pilot contact



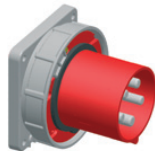
IP66/67

for waterproof cover and cable-gland see Accessories

Amps	Poles	110V~	230V~	400V~	500V~	>50-500V~
Basic unit HxWxL = 170x118x175: 1xM40, 2xM32						
63	3	533-4	533-6	533-9	533-7	533-10
63	4	534-4	534-9	534-6	534-7	534-10
63	5	535-4	535-9	535-6	535-7	535-10
Basic unit HxWxL = 260x160x209: 1xM63, 2xø40						
125	3	543-4	543-6	543-9	543-7	543-10
125	4	544-4	544-9	544-6	544-7	544-10
125	5	545-4	545-9	545-6	545-7	545-10

“Power Twist” flanged plug, straight

- nickel-plated contacts with pilot contact



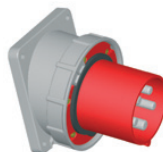
IP66/67

for waterproof cover see Accessories

Amps	Poles	110V~	230V~	400V~	500V~	>50-500V~
Flange: 100x100, fixing center: 80x80						
63	3	633-4	633-6	633-9	633-7	633-10
63	4	634-4	634-9	634-6	634-7	634-10
63	5	635-4	635-9	635-6	635-7	635-10
Flange: 120x120, fixing center: 100x100						
125	3	643-4	643-6	643-9	643-7	643-10
125	4	644-4	644-9	644-6	644-7	644-10
125	5	645-4	645-9	645-6	645-7	645-10

“Power Twist” flanged plug, sloping/angle

- nickel-plated contacts with pilot contact



IP66/67

for waterproof cover see Accessories

Amps	Poles	110V~	230V~	400V~	500V~	>50-500V~
Flange: 112x100, fixing center: 88x80						
63	3	733-4	733-6	733-9	733-7	733-10
63	4	734-4	734-9	734-6	734-7	734-10
63	5	735-4	735-9	735-6	735-7	735-10
Flange: 130x120, fixing center: 108x100						
125	3	743-4	743-6	743-9	743-7	743-10
125	4	744-4	744-9	744-6	744-7	744-10

“Power Twist” connector

- with Twist-cable gland
- with lamellar contact
- for version with pilot contact insert a “5” in the order number, e.g. 2335-6



IP66/67

Amps	Poles	110V~	230V~	400V~	500V~	>50-500V~
63	3	233-4	233-6	233-9	233-7	233-10
63	4	234-4	234-9	234-6	234-7	234-10
63	5	235-4	235-9	235-6	235-7	235-10
125	3	243-4	243-6	243-9	243-7	243-10
125	4	244-4	244-9	244-6	244-7	244-10
125	5	245-4	245-9	245-6	245-7	245-10

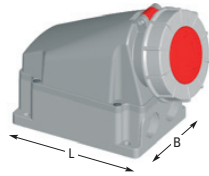
Order No. Order No. Order No. Order No. Order No.

110V~ 50/60Hz 4h	230V~ 50/60Hz 3p=6h 4p+5p=9h	400V~ 50/60Hz 3p=9h 4p+5p=6h	500V~ 50/60Hz 7h	>50-500V~ 100-300Hz 10h
-------------------------------	--	--	-------------------------------	---

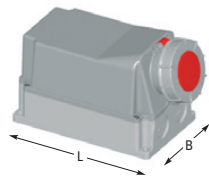
Order numbers

“Power Twist” wall socket

- cable entry from top, bottom or rear
- with lamellar contact
- for version with pilot contact insert a “5” in the order number, e.g. 1335-6



HxWxL = 170x118x172



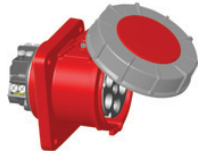
HxWxL = 260x160x190

IP66/67

Amps	Poles	110V~	230V~	400V~	500V~	>50-500V~
		Basic unit HxWxL = 170x118x172: 1xM40, 2xM32				
63	3	133-4	133-6	133-9	133-7	133-10
63	4	134-4	134-9	134-6	134-7	134-10
63	5	135-4	135-9	135-6	135-7	135-10
		Basic unit HxWxL = 260x160x190: 1xM40, 2xø40				
63	3	1337-4	1337-6	1337-9	1337-7	1337-10
63	4	1347-4	1347-9	1347-6	1347-7	1347-10
63	5	1357-4	1357-9	1357-6	1357-7	1357-10
		Basic unit HxWxL = 260x160x201: 1xø50, 2xø40				
125	3	143-4	143-6	143-9	143-7	143-10
		Basic unit HxWxL = 260x160x201: 1xM63, 2xø40				
125	4	144-4	144-9	144-6	144-7	144-10
125	5	145-4	145-9	145-6	145-7	145-10

“Power Twist” flanged socket, straight

- with lamellar contact
- for version with pilot contact insert a “5” in the order number, e.g. 3335-6



IP66/67

Amps	Poles	110V~	230V~	400V~	500V~	>50-500V~
		Flange: 100x100, fixing center: 80x80				
63	3	333-4	333-6	333-9	333-7	333-10
63	4	334-4	334-9	334-6	334-7	334-10
63	5	335-4	335-9	335-6	335-7	335-10
		Flange: 107x100, fixing center: 85x77				
63	3	333-4fc	333-6fc	333-9fc	333-7fc	333-10fc
63	4	334-4fc	334-9fc	334-6fc	334-7fc	334-10fc
63	5	335-4fc	335-9fc	335-6fc	335-7fc	335-10fc
		Flange: 120x120, fixing center: 100x100				
125	3	343-4	343-6	343-9	343-7	343-10
125	4	344-4	344-9	344-6	344-7	344-10
125	5	345-4	345-9	345-6	345-7	345-10

“Power Twist” flanged socket, sloping/angle

- with lamellar contact
- for version with pilot contact insert a “5” in the order number, e.g. 4335-6



IP66/67

Amps	Poles	110V~	230V~	400V~	500V~	>50-500V~
		Flange: 112x100, fixing center: 88x80				
63	3	433-4	433-6	433-9	433-7	433-10
63	4	434-4	434-9	434-6	434-7	434-10
63	5	435-4	435-9	435-6	435-7	435-10

IP66/67 watertight

Order No. Order No. Order No. Order No. Order No.

110V~ 50/60Hz 4h	230V~ 50/60Hz 3p=6h 4p+5p=9h	400V~ 50/60Hz 3p=9h 4p+5p=6h	500V~ 50/60Hz 7h	>50-500V~ 100-300Hz 10h
-------------------------------	--	--	-------------------------------	---

Order numbers

“Power Twist” flanged socket, sloping/angle

- with lamellar contact
- for version with pilot contact insert a “5” in the order number, e.g. 4335-6

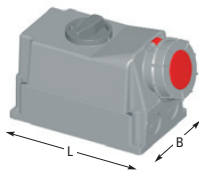


IP66/67

Amps	Poles	Flange: 107x100, fixing center: 85x77	Flange: 110x106, fixing center: 90x90	Flange: 130x120, fixing center: 108x100	Flange: 114x114, fixing center: 90x90	
63	3	433-4fc	433-6fc	433-9fc	433-7fc	433-10fc
63	4	434-4fc	434-9fc	434-6fc	434-7fc	434-10fc
63	5	435-4fc	435-9fc	435-6fc	435-7fc	435-10fc
63	3	433-4fd	433-6fd	433-9fd	433-7fd	433-10fd
63	4	434-4fd	434-9fd	434-6fd	434-7fd	434-10fd
63	5	435-4fd	435-9fd	435-6fd	435-7fd	435-10fd
125	3	443-4	443-6	443-9	443-7	443-10
125	4	444-4	444-9	444-6	444-7	444-10
125	5	445-4	445-9	445-6	445-7	445-10
125	3	443-4fe	443-6fe	443-9fe	443-7fe	443-10fe
125	4	444-4fe	444-9fe	444-6fe	444-7fe	444-10fe
125	5	445-4fe	445-9fe	445-6fe	445-7fe	445-10fe

“Power Twist” Switched interlocked socket

- mechanical interlock
- cable entry from top, bottom or rear
- with lamellar contact
- for version with pilot contact insert a “5” in the order number, e.g. 753525-6



IP66/67

Amps	Poles	Basic unit HxWxL = 260x160x201: 1xM40, 2xø40
63	3	75332-4 75332-6 75332-9 75332-7
63	4	75342-4 75342-9 75342-6 75342-7
63	5	75352-4 75352-9 75352-6 75352-7

Accessories

Waterproof cover



s7632g

IP67 waterproof cover for 63A plugs and appliance plugs

s1252g

IP67 waterproof cover for 125A plugs and appliance plugs

23321515200	IP68 M32x1.5 screw fitting - black	(cable diameter 18-25 mm)
23401518260	IP68 M40x1.5 screw fitting - black	(cable diameter 22-32 mm)
23501518310	IP68 M50x1.5 screw fitting - black	(cable diameter 32-38 mm)
23631518350	IP68 M63x1.5 screw fitting - black	(cable diameter 34-44 mm)

264015009	M40 x 1.5 lock nut Nickel-coated brass
265015009	M50 x 1.5 lock nut Nickel-coated brass

Note: For entries without threads, marked by “ø”, the appropriate lock nuts should be used.

IP66/67 watertight



PC ELECTRIC Ges.m.b.H.

A-4973 St. Martin/Innkreis
Diesseits 145

AUSTRIA - EUROPE

Tel. +43 / 7751 / 61220

Fax +43 / 7751 / 6969

e-mail: office@pcelectric.at

www.pcelectric.at